

1888



THE

STORY
&
CLARK

ORGAN CO.

CANAL AND
SIXTEENTH STS.

CHICAGO. ILL. U.S.A.



CHICAGO-ENG-CO





STORY & CLARK ORGAN

COMPANY.

INCORPORATED, 1888.



The
* Story & Clark Organ *
Company.



Office and Manufactory
Canal and 16th Sts Chicago Ill
U. S. A.



Take Canalport cars on Randolph Street.





STORY & CLARK ORGAN

COMPANY.

LIST PRICES AND TELEGRAPH CODE.

STYLE.	CODE.	PRICE.
500	Story	\$100 00
501	And	215 00
502	Clark	240 00
503	Organ	265 00
504	Company	290 00
506	Chicago	225 00
507	Illinois	255 00
520	Ignatius	210 00
521	Ingelow	235 00
522	Irving	260 00
523	Ivan	285 00
524	Iliad	310 00
526	Innocent	250 00
527	Ivory	250 00
430	Jennie	240 00
431	Jane	265 00
432	Josie	290 00
433	Jennette	315 00
434	Julia	310 00
436	Joseph	285 00
437	James	315 00
440	Katastra	275 00
441	Kate	300 00
442	Kittie	325 00
443	Katharine	350 00
444	Kessie	375 00
446	Koko	330 00
447	Karl	360 00
510	Prince	315 00
541	Peter	340 00
542	Piper	365 00
543	Picked	390 00
544	Peck	415 00
546	Pickled	360 00
547	Peppers	390 00
380	Louise	220 00
381	Laura	245 00
382	Lettie	270 00
383	Lenora	295 00
384	Lora	320 00
350	Fannie	295 00
351	Flora	320 00
352	Florence	345 00
353	Frankie	370 00
354	Francis	395 00
Mozart without pipe top		670 00
Mozart with pipe top		850 00
Monarch without pipe top		1,500 00
Monarch with pipe top		1,800 00

OUR NEW CLARK METAL STOP KNOB.—Patents Applied For.

The old knob used so universally by other manufacturers has these defects, namely: the falling out or checking of stop face—the washing out of the letters—the ungluing of knob from shank, etc., etc. These defects we have overcome by introducing the Clark Metal and Metal Combination Knob. It does not differ particularly in form from the old wooden knob, but adds very materially to the beauty of the organ. It is made of suitable metal and highly polished. This fact makes it apparent to every one that all the old defects cease.



STORY & CLARK ORGAN

COMPANY.

DIRECTORS:

HAMPTON L. STORY, *President.*

MELVILLE CLARK, *Vice-President.*

WM. A. DODGE, *Secretary and Treasurer.*

E. H. STORY.

W. D. CALDWELL.

TO THE TRADE.

IN issuing this our second edition for 1888, we are enabled with increased facilities to place before the trade such a line of cases and instruments as shall take the public by storm.

The factory capacity of 1887 has been fully doubled. The recent new addition gives double room, elegant offices and model organ warerooms.

The additional room required has necessitated the placing of another large boiler which gives ample power and heat.

The Walworth system of sprinklers assures, with other precautions, an almost absolute fire-proof building.

We can say, in all truth, without fear of controversy, that we now have the model organ factory of the world.

The tuning department with its corps of efficient workmen is our pride and power.

The machine room, case, action, and finishing departments, are greatly improved, and the results from same may be readily discovered in our large line of instruments.

A number of new patents have recently been granted us, and with many others, which we control, we are able to manufacture an organ which has no equal. Other patents are pending in the office at Washington, D. C., and Canada.

Having recently incorporated under the laws of Illinois, as a stock company, with a capital of \$300,000, we have with our increased scope, power and capacity, such advantages coupled with our perfect location as will defy competition.

A five year warranty accompanies each organ.

We ask only a careful inspection of our organ by best critics, and we are satisfied to abide results.

STORY & CLARK ORGAN CO.,

Canal and 18th Streets,

CHICAGO, ILL.



STORY & CLARK ORGAN

COMPANY.

Style * 500.

The certain line of trade demands a simple and plain case, yet one consistent with good work. The result of this demand is readily seen upon opposite page.

The action or musical part is the same as found in any of the better cases. This should be distinctly understood.

DESCRIPTION OF FIVE AND SIX OCTAVE ORGANS.

Style 500.—Case illustrated on opposite page. Contains four sets of reeds of two and one-half octaves each. Nine stops as follows: Diapason, Melodia, Viola, Celeste, Echo Horn, Dulcet, Bass Forte, Treble Forte, Vox Humana. Also has Knee Swell and our Patented Knee Grand Organ.

Style 506.—This style is the same as Style 500, but has six octaves, with the same number of stops and sets of reeds.

Style 501.—Case illustrated on opposite page. Contains four sets of reeds of two and one-half octaves each and our Double Divided Octave Coupler. Eleven stops as follows: Diapason, Melodia, Viola, Celeste, Echo Horn, Dulcet, Bass Forte, Treble Forte, *Bass Coupler*, *Treble Coupler* and Vox Humana. Also has Knee Swell and our Patented Knee Grand Organ.

Style 507. This style is the same as Style 501, but has six octaves with the same number of stops and sets of reeds.

Style 502.—Case illustrated on opposite page. Contains five sets of reeds—four sets of two and one-half octaves each, and one set of three octaves. Twelve stops as follows: Diapason, Melodia, Viola, *Flute*, Celeste, Echo Horn, Dulcet, Bass Forte, Treble Forte, Vox Humana, Bass Coupler, Treble Coupler. Also has Knee Swell and our Patented Knee Grand Organ.

Style 503.—Case illustrated on opposite page. Contains six sets of reeds—four sets of two and one-half octaves each, one set of three octaves, and one set of powerful Sub Bass Reeds. Thirteen stops as follows: Diapason, Melodia, Viola, *Flute*, Celeste, Dulcet, Echo Horn, Bass Forte, Treble Forte, *Sub Bass*, Bass Coupler, Treble Coupler, Vox Humana. Also has Knee Swell and our Patented Knee Grand Organ.

Style 504.—Case illustrated on opposite page. Contains seven sets of reeds—four sets of two and one-half octaves each, two sets of three octaves each, and one set of very powerful *double Sub Bass* reeds. Fifteen stops as follows: Diapason, Melodia, Viola, *Flute*, Celeste, *Cello*, *Vacuum Viola* (patented), Dulcet, Echo Horn, Sub Bass, Bass Forte, Treble Forte, Vox Humana, Bass Coupler, Treble Coupler. Also has Knee Swell and our Patented Knee Grand Organ.

We will make to order in the six octave instruments, any of the above combinations, but carry in stock only styles 506 and 507.

For list prices of all organs see page 2.

1.—Our cases are all of solid black walnut





STORY & CLARK ORGAN

COMPANY.

Style * 520.

SIMPLE, yet graceful and exquisitely proportioned, this case readily bespeaks popular approval.

An innovation of great merit is the new lamp balcony on either side of the music rest. Enclosed by a pretty quarter-circle railing, the lamp stands sufficiently forward for the light to fall directly upon the music. The lamp, now fully protected, does away with the old, dangerous lamp stand at the side of the organ.

The pretty bead-like railing and lyre-like top, with bric-a-brac shelves for statuary or vases, makes this case very artistic and an ornament to any room.

DESCRIPTION OF FIVE AND SIX OCTAVE ORGANS.

Style 520.—Case illustrated on opposite page. Contains four sets of reeds of two and one-half octaves each. Nine stops as follows: Diapason, Melodia, Viola, Celeste, Echo Horn, Dulcet, Bass Forte, Treble Forte, Vox Humana. Also has Knee Swell and our patented Knee Grand Organ.

Style 526.—This style is the same as Style 520, but has six octaves, with the same number of stops and sets of reeds.

Style 521.—Case illustrated on opposite page. Contains four sets of reeds of two and one-half octaves each and our Double Divided octave Coupler. Eleven stops as follows: Diapason, Melodia, Viola, Celeste, Echo Horn, Dulcet, Bass Forte, Treble Forte, *Bass Coupler*, *Treble Coupler* and Vox Humana. Also has Knee Swell and our Patented Knee Grand Organ.

Style 527. This style is the same as Style 521, but has six octaves with the same number of stops and sets of reeds.

Style 522.—Case illustrated on opposite page. Contains five sets of reeds—four sets of two and one-half octaves each, and one set of three octaves. Twelve stops as follows: Diapason, Melodia, Viola, *Flute*, Celeste, Echo Horn, Dulcet, Bass Forte, Treble Forte, Vox Humana, Bass Coupler, *Treble Coupler*. Also has Knee Swell and our Patented Knee Grand Organ.

Style 523.—Case illustrated on opposite page. Contains six sets of reeds—four sets of two and one-half octaves each, one set of three octaves, and one set of powerful Sub Bass Reeds. Thirteen stops as follows: Diapason, Melodia, Viola, *Flute*, Celeste, Dulcet, Echo Horn, Bass Forte, Treble Forte, *Sub Bass*, Bass Coupler, Treble Coupler, Vox Humana. Also has Knee Swell and our Patented Knee Grand Organ.

Style 524.—Case illustrated on opposite page. Contains seven sets of reeds—four sets of two and one-half octaves each, two sets of three octaves each, and one set of very powerful *double Sub Bass* reeds. Fifteen stops as follows: Diapason, Melodia, Viola, *Flute*, Celeste, *Cello*, *Vacuum Viola* (patented), Dulcet, Echo Horn, Sub Bass, Bass Forte, Treble Forte, Vox Humana, Bass Coupler, *Treble Coupler*. Also has Knee Swell and our Patented Knee Grand Organ.

We will make to order in the six octave instruments, any of the above combinations, but carry in stock only styles 526 and 527.

For list prices of all organs see page 2.



STORY & CLARK ORGAN

COMPANY.



Height, 6 feet $3\frac{1}{2}$ inches. Length, 4 feet $1\frac{1}{2}$ inches. Depth, 1 foot $11\frac{1}{2}$ inches
Weight—boxed, 350 lbs.



STORY & CLARK ORGAN

COMPANY.

Style 430.

THIS case is simply the most elaborate and elegant parlor organ case made. Its graceful curves,—“lines of beauty,”—and bold but harmonious whole, give an artistic effect never before reached. The Canopy Top Organs are in great demand, and last years sales warrant a superior production. Years of experience have wrought out this case and it stands alone—the model.

The rich veneers, the solid panels, genuine French veneer panels, fine hand carving, and turnings, in combination produce a wonderful ensemble, and makes it “fit ornament for a Kingly Palace.”

DESCRIPTION OF FIVE AND SIX OCTAVE ORGANS.

Style 430.—Case illustrated on opposite page. Contains four sets of reeds of two and one-half octaves each. Nine stops as follows: Diapason, Melodia, Viola, Celeste, Echo Horn, Dulcet, Bass Forte, Treble Forte, Vox Humana. Also has Knee Swell and our Patented Knee Grand Organ.

Style 436.—This style is the same as Style 430, but has six octaves, with the same number of stops and sets of reeds.

Style 431.—Case illustrated on opposite page. Contains four sets of reeds of two and one-half octaves each and our Double Divided Octave Coupler. Eleven stops as follows: Diapason, Melodia, Viola, Celeste, Echo Horn, Dulcet, Bass Forte, Treble Forte, Bass Coupler, Treble Coupler and Vox Humana. Also has Knee Swell and our Patented Knee Grand Organ.

Style 437.—This style is the same as Style 431, but has six octaves, with the same number of stops and sets of reeds.

Style 432.—Case illustrated on opposite page. Contains five sets of reeds—four sets of two and one-half octaves each, and one set of three octaves. Twelve stops as follows: Diapason, Melodia, Viola, Flute, Celeste, Echo Horn, Dulcet, Bass Forte, Treble Forte, Vox Humana, Bass Coupler and Treble Coupler. Also Knee Swell and our Patented Knee Grand Organ.

Style 433.—Case illustrated on opposite page. Contains six sets of reeds—four sets of two and one-half octaves each, one set of three octaves, and one set of very powerful Sub Bass Reeds. Thirteen stops as follows: Diapason, Melodia, Viola, Flute, Celeste, Dulcet, Echo Horn, Bass Forte, Treble Forte, Sub Bass, Bass Coupler, Treble Coupler, Vox Humana. Also has Knee Swell and our Patented Knee Grand Organ.

Style 434.—Case illustrated on opposite page. Contains seven sets of reeds—four sets of two and one-half octaves each, two sets of three octaves each, and one set of very powerful double Sub Bass reeds. Fifteen stops as follows: Diapason, Melodia, Viola, Flute, Celeste, Cello, Vacuum Viola (patented), Dulcet, Echo Horn, Sub Bass, Bass Forte, Treble Forte, Vox Humana, Bass Coupler, Treble Coupler. Also has Knee Swell and our Patented Knee Grand Organ.

We will make to order in the six octave instruments, any of the above combinations, but carry in stock only styles 436 and 437.

For list prices of all organs see page 2.

3.—The large music repository, back of music rack is a strong point in our favor.



STORY & CLARK ORGAN

COMPANY.



Height, 6 feet 7 inches.

Length, 4 feet 5 inches.

Depth, 2 feet.

Weight—boxed, 375 lbs.



STORY & CLARK ORGAN

COMPANY.

Style * 440.

THIS case is in exact keeping with the more modern style of furniture and is exceedingly rich and beautiful. Special attention is called to the exquisite hand carving and genuine French veneer panels. Statuary and bric-a-brac may be used with very pretty effect with this organ. Under the canopy top a heavy bevel plate mirror, 18 x 20 inches, adds great value and beauty to the case.

DESCRIPTION OF FIVE AND SIX OCTAVE ORGANS.

Style 440.—Case illustrated on opposite page. Contains four sets of reeds of two and one-half octaves each. Nine stops as follows: Diapason, Melodia, Viola, Celeste, Echo Horn, Dulcet, Bass Forte, Treble Forte, Vox Humana. Also has Knee Swell and our Patented Knee Grand Organ.

Style 446.—This style is the same as Style 440, but has six octaves, with the same number of stops and sets of reeds.

Style 441.—Case illustrated on opposite page. Contains four sets of reeds of two and one-half octaves each and our Double Divided Octave Coupler. Eleven stops as follows: Diapason, Melodia, Viola, Celeste, Echo Horn, Dulcet, Bass Forte, Treble Forte, Bass Coupler, Treble Coupler and Vox Humana. Also has Knee Swell and our Patented Knee Grand Organ.

Style 447.—This style is the same as Style 441, but has six octaves, with the same number of stops and sets of reeds.

Style 442.—Case illustrated on opposite page. Contains five sets of reeds—four sets of two and one-half octaves each, and one set of three octaves. Twelve stops as follows: Diapason, Melodia, Viola, Flute, Celeste, Echo Horn, Dulcet, Bass Forte, Treble Forte, Vox Humana, Bass Coupler and Treble Coupler. Also Knee Swell and our Patented Knee Grand Organ.

Style 443.—Case illustrated on opposite page. Contains six sets of reeds—four sets of two and one-half octaves each, one set of three octaves, and one set of powerful Sub Bass Reeds. Thirteen stops as follows: Diapason, Melodia, Viola, Flute, Celeste, Dulcet, Echo Horn, Bass Forte, Treble Forte, Sub Bass, Bass Coupler, Treble Coupler, Vox Humana. Also has Knee Swell and our Patented Knee Grand Organ.

Style 444.—Case illustrated on opposite page. Contains seven sets of reeds—four sets of two and one-half octaves each, two sets of three octaves each, and one set of very powerful double Sub Bass reeds. Fifteen stops as follows: Diapason, Melodia, Viola, Flute, Celeste, Cello, Vacuum Viola (patented), Dulcet, Echo Horn, Sub Bass, Bass Forte, Treble Forte, Vox Humana, Bass Coupler, Treble Coupler. Also has Knee Swell and our Patented Knee Grand Organ.

We will make to order in the six octave instruments, any of the above combinations, but carry in stock only styles 446 and 447.

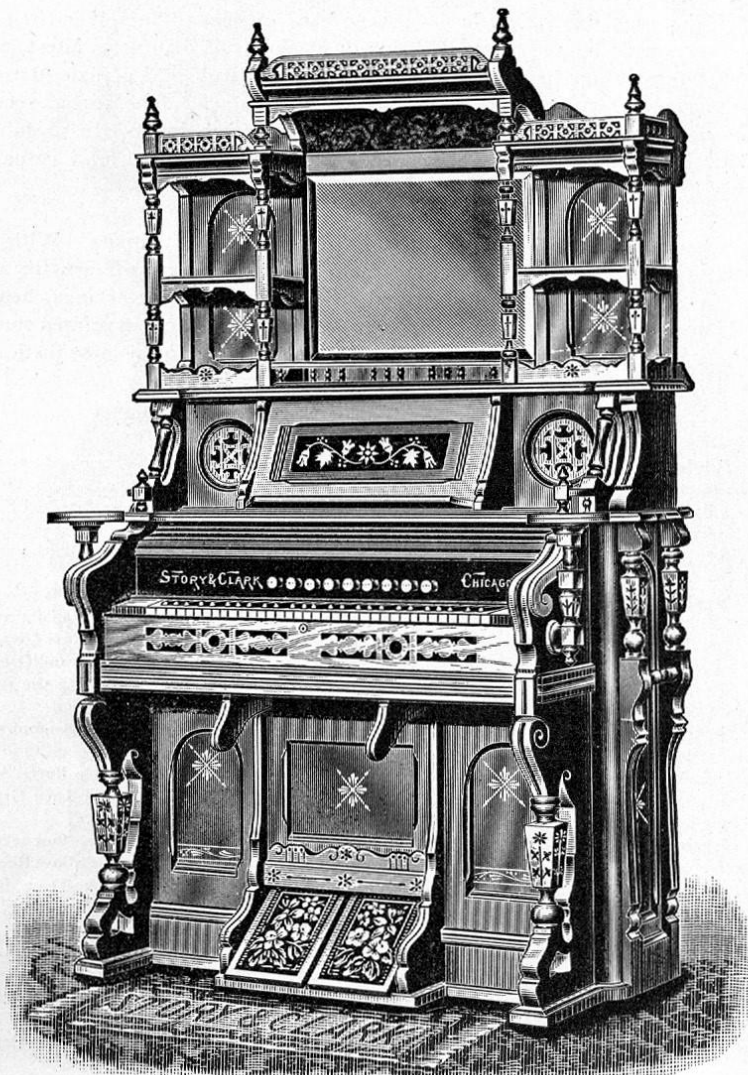
For list prices of all organs see page 2.

4.—The top of all parlor cases are hinged, turn back and expose the whole internal mechanism.

Special attention is called to our anti-friction swell roller. Patent applied for.



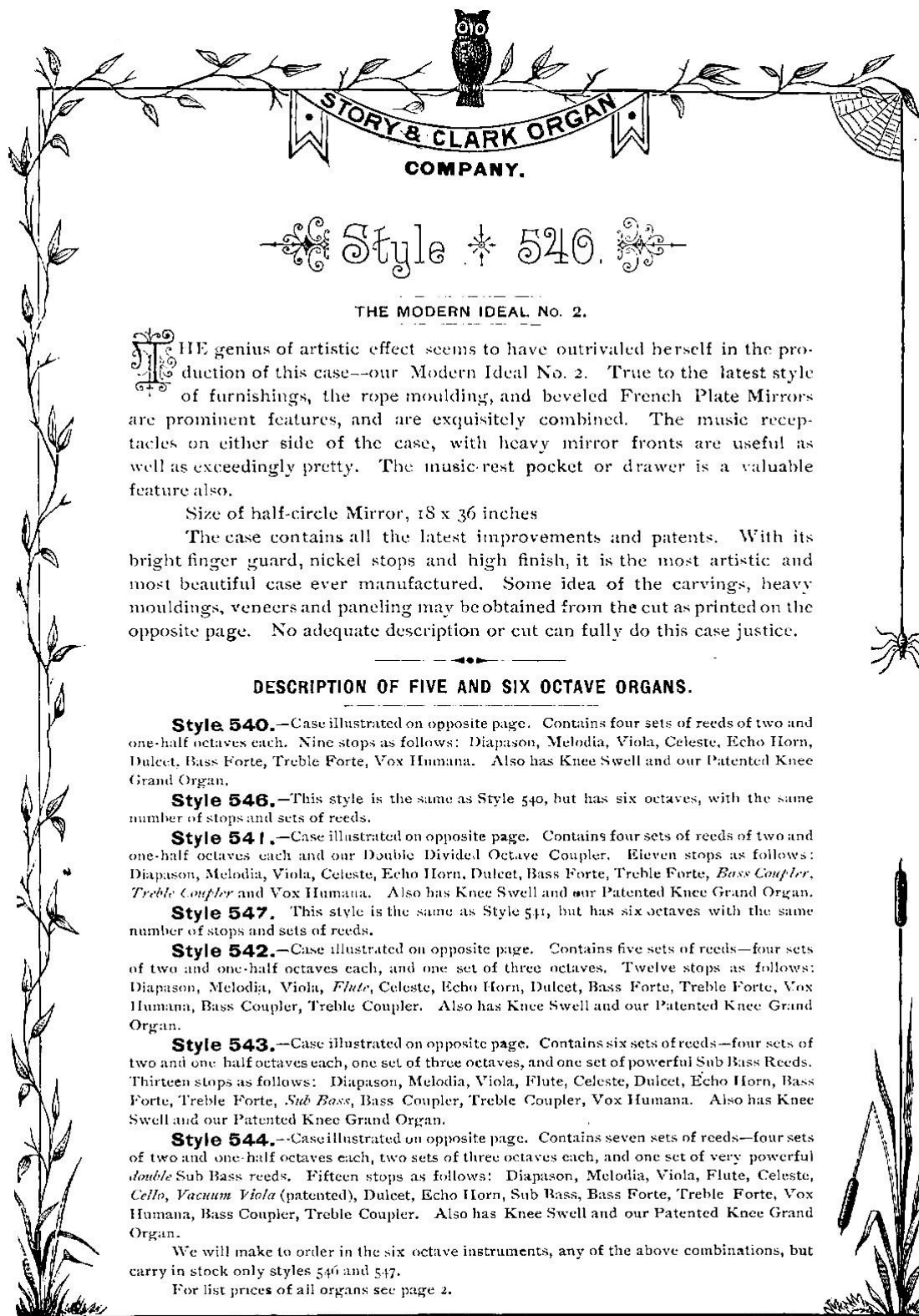
STORY & CLARK ORGAN
COMPANY.



Height, 7 feet.

Length, 4 feet 5 inches.
Weight—boxed, 375 lbs.

Depth, 2 feet.



STORY & CLARK ORGAN
COMPANY.

Style 540.

THE MODERN IDEAL No. 2.

THE genius of artistic effect seems to have outrivaled herself in the production of this case—our Modern Ideal No. 2. True to the latest style of furnishings, the rope moulding, and beveled French Plate Mirrors are prominent features, and are exquisitely combined. The music receptacles on either side of the case, with heavy mirror fronts are useful as well as exceedingly pretty. The music-rest pocket or drawer is a valuable feature also.

Size of half-circle Mirror, 18 x 36 inches

The case contains all the latest improvements and patents. With its bright finger guard, nickel stops and high finish, it is the most artistic and most beautiful case ever manufactured. Some idea of the carvings, heavy mouldings, veneers and paneling may be obtained from the cut as printed on the opposite page. No adequate description or cut can fully do this case justice.

DESCRIPTION OF FIVE AND SIX OCTAVE ORGANS.

Style 540.—Case illustrated on opposite page. Contains four sets of reeds of two and one-half octaves each. Nine stops as follows: Diapason, Melodia, Viola, Celeste, Echo Horn, Dulcet, Bass Forte, Treble Forte, Vox Humana. Also has Knee Swell and our Patented Knee Grand Organ.

Style 546.—This style is the same as Style 540, but has six octaves, with the same number of stops and sets of reeds.

Style 541.—Case illustrated on opposite page. Contains four sets of reeds of two and one-half octaves each and our Double Divided Octave Coupler. Eleven stops as follows: Diapason, Melodia, Viola, Celeste, Echo Horn, Dulcet, Bass Forte, Treble Forte, Bass Coupler, Treble Coupler and Vox Humana. Also has Knee Swell and our Patented Knee Grand Organ.

Style 547. This style is the same as Style 541, but has six octaves with the same number of stops and sets of reeds.

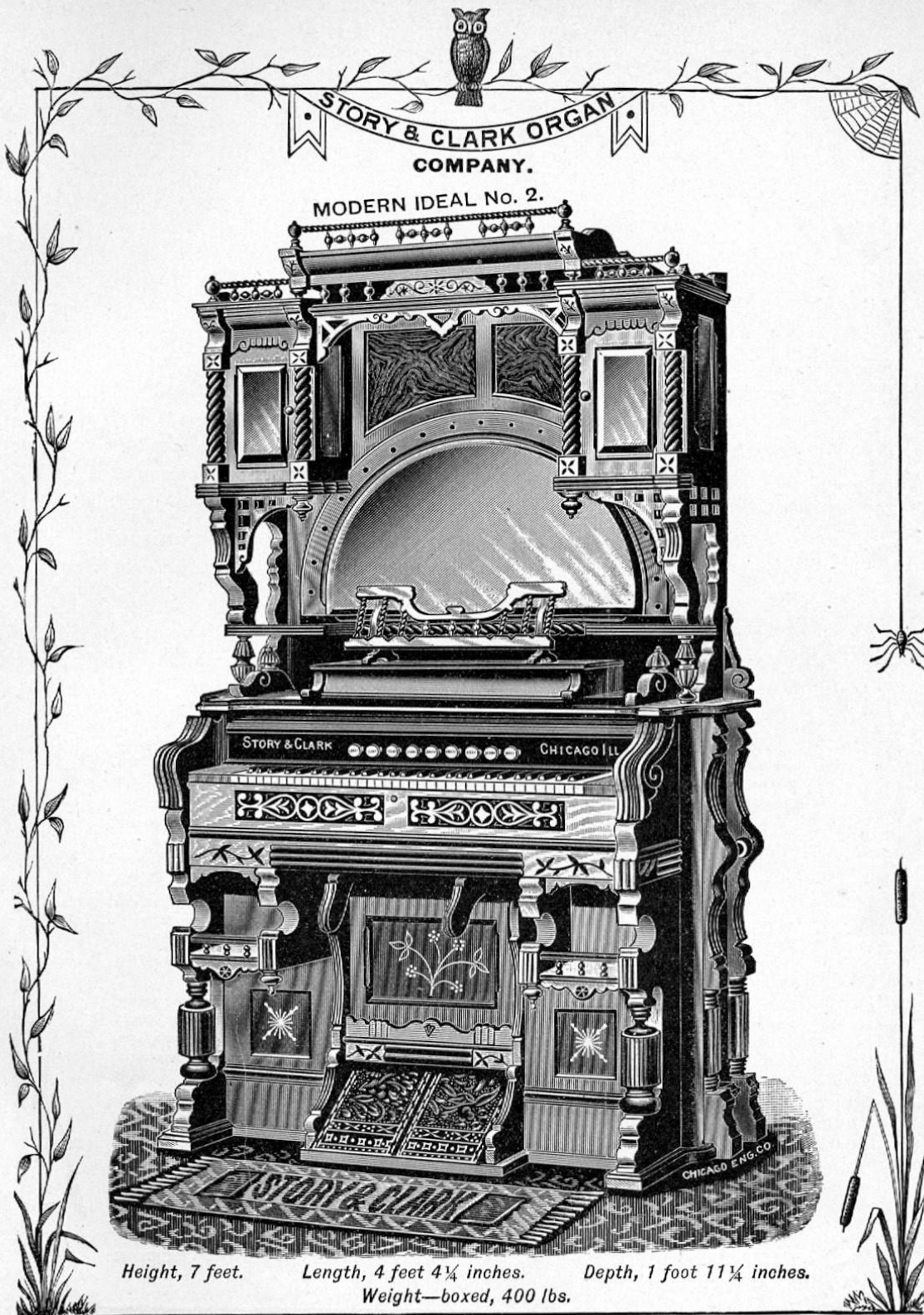
Style 542.—Case illustrated on opposite page. Contains five sets of reeds—four sets of two and one-half octaves each, and one set of three octaves. Twelve stops as follows: Diapason, Melodia, Viola, Flute, Celeste, Echo Horn, Dulcet, Bass Forte, Treble Forte, Vox Humana, Bass Coupler, Treble Coupler. Also has Knee Swell and our Patented Knee Grand Organ.

Style 543.—Case illustrated on opposite page. Contains six sets of reeds—four sets of two and one-half octaves each, one set of three octaves, and one set of powerful Sub Bass Reeds. Thirteen stops as follows: Diapason, Melodia, Viola, Flute, Celeste, Dulcet, Echo Horn, Bass Forte, Treble Forte, Sub Bass, Bass Coupler, Treble Coupler, Vox Humana. Also has Knee Swell and our Patented Knee Grand Organ.

Style 544.—Case illustrated on opposite page. Contains seven sets of reeds—four sets of two and one-half octaves each, two sets of three octaves each, and one set of very powerful double Sub Bass reeds. Fifteen stops as follows: Diapason, Melodia, Viola, Flute, Celeste, Cello, Vacuum Viola (patented), Dulcet, Echo Horn, Sub Bass, Bass Forte, Treble Forte, Vox Humana, Bass Coupler, Treble Coupler. Also has Knee Swell and our Patented Knee Grand Organ.

We will make to order in the six octave instruments, any of the above combinations, but carry in stock only styles 540 and 547.

For list prices of all organs see page 2.





STORY & CLARK ORGAN COMPANY.

Style 380.

THIS instrument is one which can be highly recommended for church, chapel, lodge or school purposes. It is thoroughly practical, and will be found not only to please in appearance, but will satisfy in tone and power in any of the following combinations. The back is finished in walnut with a pretty scroll piece. This allows the performer to face the audience and throws the entire volume of sound into the auditorium.

Our parlor organs can be utilized for church or other purposes by taking out two screws and swinging the top back. This increases the volume of sound, allows the player to see over the organ and does not destroy the beauty of the case.

DESCRIPTION OF FIVE OCTAVE ORGANS.

Style 380.—Case illustrated on opposite page. Contains four sets of reeds of two and one-half octaves each. Nine stops as follows: Diapason, Melodia, Viola, Celeste, Echo Horn, Dulcet, Bass Forte, Treble Forte, Vox Humana. Also has Knee Swell and our Patented Knee Grand Organ.

Style 381.—Case illustrated on opposite page. Contains four sets of reeds of two and one-half octaves each and our Double Divided Octave Coupler. Eleven stops as follows: Diapason, Melodia, Viola, Celeste, Echo Horn, Dulcet, Bass Forte, Treble Forte, *Bass Coupler*, *Treble Coupler* and Vox Humana. Also has Knee Swell and our Patented Knee Grand Organ.

Style 382.—Case illustrated on opposite page. Contains five sets of reeds—four sets of two and one-half octaves each, and one set of three octaves. Twelve stops as follows: Diapason, Melodia, Viola, *Flute*, Celeste, Echo Horn, Dulcet, Bass Forte, Treble Forte, Vox Humana, Bass Coupler and Treble Coupler. Also Knee Swell and our Patented Knee Grand Organ.

Style 383.—Case illustrated on opposite page. Contains six sets of reeds—four sets of two and one-half octaves each, one set of three octaves, and one set of powerful Sub Bass Reeds. Thirteen stops as follows: Diapason, Melodia, Viola, *Flute*, Celeste, Dulcet, Echo Horn, Bass Forte, Treble Forte, *Sub Bass*, Bass Coupler, Treble Coupler, Vox Humana. Also has Knee Swell and our Patented Knee Grand Organ.

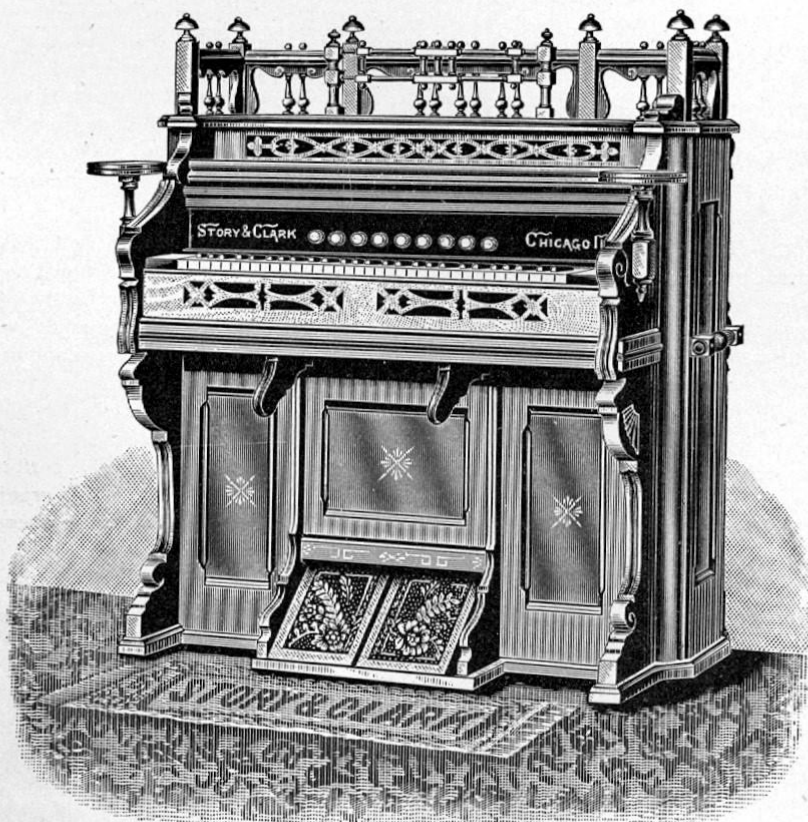
Style 384.—Case illustrated on opposite page. Contains seven sets of reeds—four sets of two and one-half octaves each, two sets of three octaves each, and one set of very powerful *double Sub Bass* reeds. Fifteen stops as follows: Diapason, Melodia, Viola, *Flute*, Celeste, Cello, *Vacuum Viola* (patented), Dulcet, Echo Horn, Sub Bass, Bass Forte, Treble Forte, Vox Humana, Bass Coupler, Treble Coupler. Also has Knee Swell and our Patented Knee Grand Organ.

For list prices of all organs see page 2.

5.—The framing and paneling of every part of our case and bellows leaves no chance for warping.



STORY & CLARK ORGAN
COMPANY.



Height, 4 feet 4 inches.

Length, 4 feet 1 inch.
Weight—boxed, 340 lbs.

Depth, 2 feet 1 inch.



STORY & CLARK ORGAN

COMPANY.

The Mozart.

THIS organ is unquestionably, in all points that go to make up a good instrument and especially in musical capacity, the most satisfactory organ ever placed before the public. It is very powerful in its registers, and the various qualities of tone produced from the different sets of reeds, the beautiful combinations effected by a proper manipulation of the stops, and the wonderful orchestral effects obtained by the use of the new Patent Grand Organ, are surprising to an extreme.

The action is "F" scale, contains eleven sets of reeds and eighteen drawing stops, as follows: One three-octave set "Jumbo Cello" reeds; one three-octave set Clarinet reeds; one two-octave set Diapason reeds; one three-octave set Melodia reeds; one two-octave set Viola reeds; one three-octave set Flute reeds; one two-octave set Bassoon reeds; one three-octave set Cello reeds; one two-octave set Violetta reeds; one three-octave set Celeste reeds, and one-octave set of powerful Sub Bass reeds; also the straight Wilcox Coupler, Vox Humana, Tremolo, our new Grand Organ (patented), new nickel-plated stop action, self-adjusting Grand Organ stop, Knee Swell, hand-pumping handle, etc.

The "Jumbo Cello" is an entirely new departure in the reed line, these reeds having been made especially for this organ, and they are so arranged and made a part of the action, that the tone obtained from them is a perfect imitation of an open pipe diapason on a great organ. It is very powerful, but exceedingly smooth, this being particularly noticeable in the upper part of the scale. These reeds, in connection with their octave set, are equal in point of power to four full sets of reeds in a common organ, and when used with the ordinary reeds in the instrument, the power obtained is truly phenomenal. All complications in construction have been avoided, thereby insuring a perfect working and serviceable instrument. We particularly recommend this organ for Church, Sunday-School, and Lodge purposes, or for any purpose where power and solo work is desirable.

This Organ is made either with or without Pipe Top.

Names and Arrangement of Stops:

BASS.		TREBLE.		AUXILIARIES.
Diapason	- - - 8 ft.	Melodia	- - - 8 ft.	Straight Wilcox Coupler.
Echo Horn	- - - 8 ft.	Dulcet	- - - 8 ft.	Vox Humana.
Viola	- - - 4 ft.	Flute	- - - 4 ft.	Bass Forte.
Vacuum Viola	- - - 4 ft.	Celeste	- - - 8 ft.	Treble Forte.
Violetta	- - - 4 ft.	Cello	- - - 16 ft.	Grand Organ (Pat.)
Bassoon	- - - 16 ft.	JUMBO CELLO	- - - 16 ft.	Knee Swell.
Sub Bass	- - - 16 ft.	Clarinet	- - - 8 ft.	

For Price List see page 2.

6.—Our Patent Grand Organ Knee Swell opens all the mutes to their fullest extent, and is the most perfect in use. We alone use this grand organ.

STORY & CLARK ORGAN
COMPANY.



Height, 9 feet.

Length, 4 feet 10 inches.

Depth, 2 feet 6 inches.



STORY & CLARK ORGAN

COMPANY.

The Monarch.

THE above appellation expresses precisely what the cut on the opposite page represents, an organ that stands pre-eminently a Monarch among all instruments of its kind. There has been a great deal of time and thought expended in the production of this organ, and we feel justified in making the assertion, that it has never been equaled, nor approached by any other manufacturer. Every part of the case is made of solid black-walnut. The ornamentalations consist of massive moldings, beautiful French burl veneered panels, and fine hand carvings, the whole being elegantly and artistically finished.

The action, constructed upon new principles and made expressly for this case, is an artistic piece of work, and will bear the most critical inspection. In its construction all complications have been avoided, thereby insuring a perfect working action, without the least liability of its getting out of order, a thing very common among large reed organs. The action contains two C scale manuals, and fifteen sets of reeds as follows: Five sets of two octaves each; eight sets of three octaves each; one set of Sub Bass reeds, and one set of powerful pedal bass reeds, also, knee swell, knee grand organ, double blow pedals, hand blower, twenty-seven pedals, and twenty-four drawing stops which are fully described at bottom of page, and from which an endless variety of combinations may be obtained. Solo effects may be strongly brought out and perfect pipe tones obtained through a studied and skilful manipulation of the stops. The church desirous of obtaining an instrument of peculiar merit and exquisite tone cannot possibly find a more perfect organ. Church organs are our specialty

This instrument is in fact a miniature pipe organ and powerful enough in volume to fill any ordinary sized church. Students who have mastered the use of our Monarch will find the change to a large pipe organ scarcely perceptible. We might say much more on this subject, but our limited space will not permit.

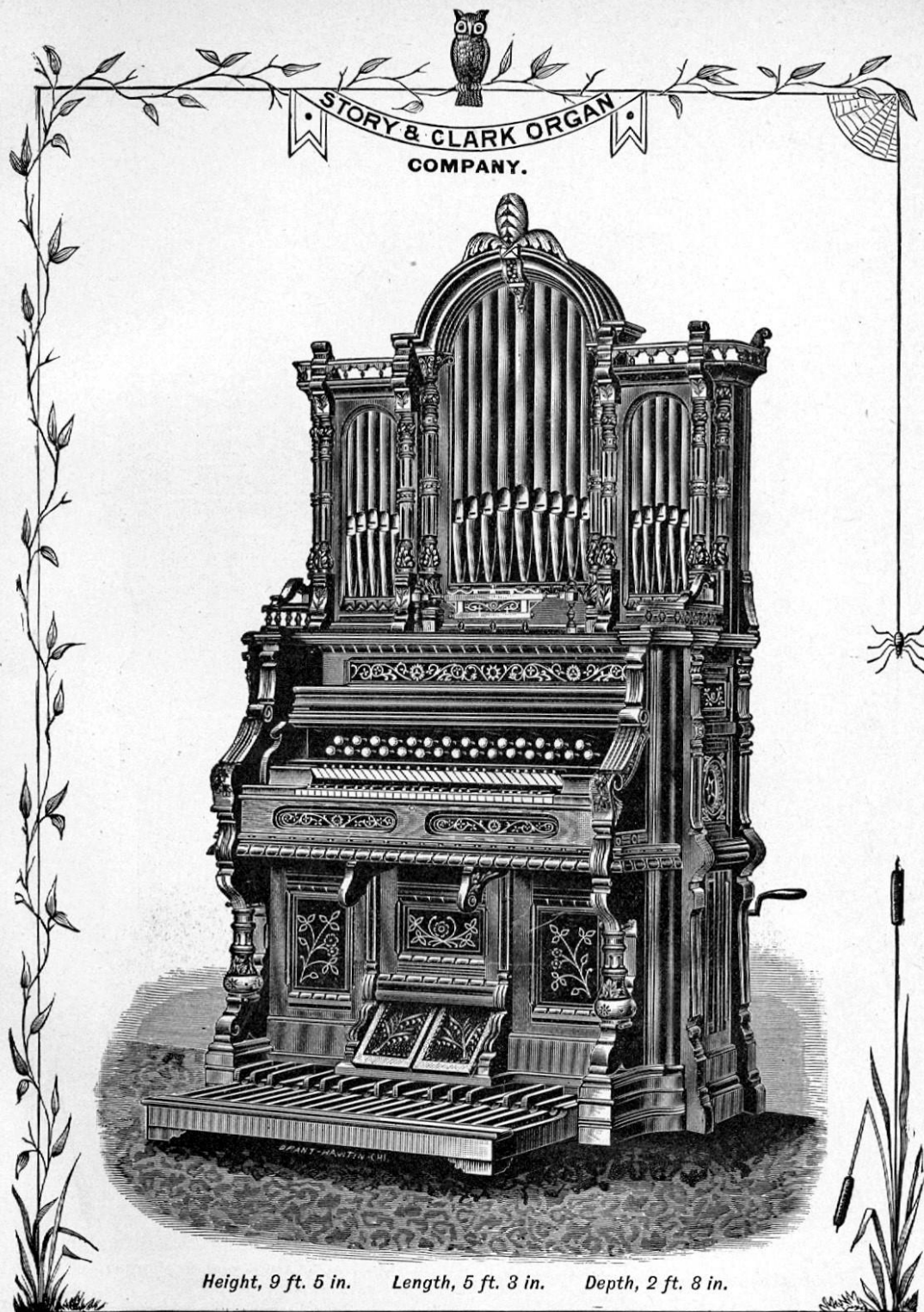
We cordially invite all to a most critical inspection of the Organ, and are especially desirous that musicians should express their opinions, feeling sure the instrument will merit their heartiest approval.

Names of Stops.

UPPER MANUAL.		La Perfection - - 8 ft.		PEDAL MANUAL.	
Diapason	- - - 8 ft.			Pedal Bass	- - - 16 ft.
Dulcet	- - - 8 ft.	LOWER MANUAL.		MECHANICAL STOPS.	
Violetta	- - - 4 ft.	Diapason Bass	- - - 8 ft.	Pedal to Manual	- Upper Manual.
Viola Eatheria	- - - 4 ft.	Dulcet Bass	- - - 8 ft.	Manual Coupler	- Lower Manual.
Melodia	- - - 8 ft.	Principal	- - - 4 ft.	Octave Coupler	- - - " "
Echo Horn	- - - 8 ft.	Diapason Treble	- - - 8 ft.	Bass Forte	- - - " "
Celeste	- - - 8 ft.	Dulcet Treble	- - - 8 ft.	Treble Forte	- - - " "
Roman Pipe	- - - 4 ft.	Principal	- - - 4 ft.	Vox Humana	- - - " "
JUMBO CELLO	- - - 16 ft.	Cello	- - - 16 ft.	Grand Organ	- - - Knee Swell.

For Price List see page 2.

7.—We make organs to order and match any style of furniture desired and out of any wood.



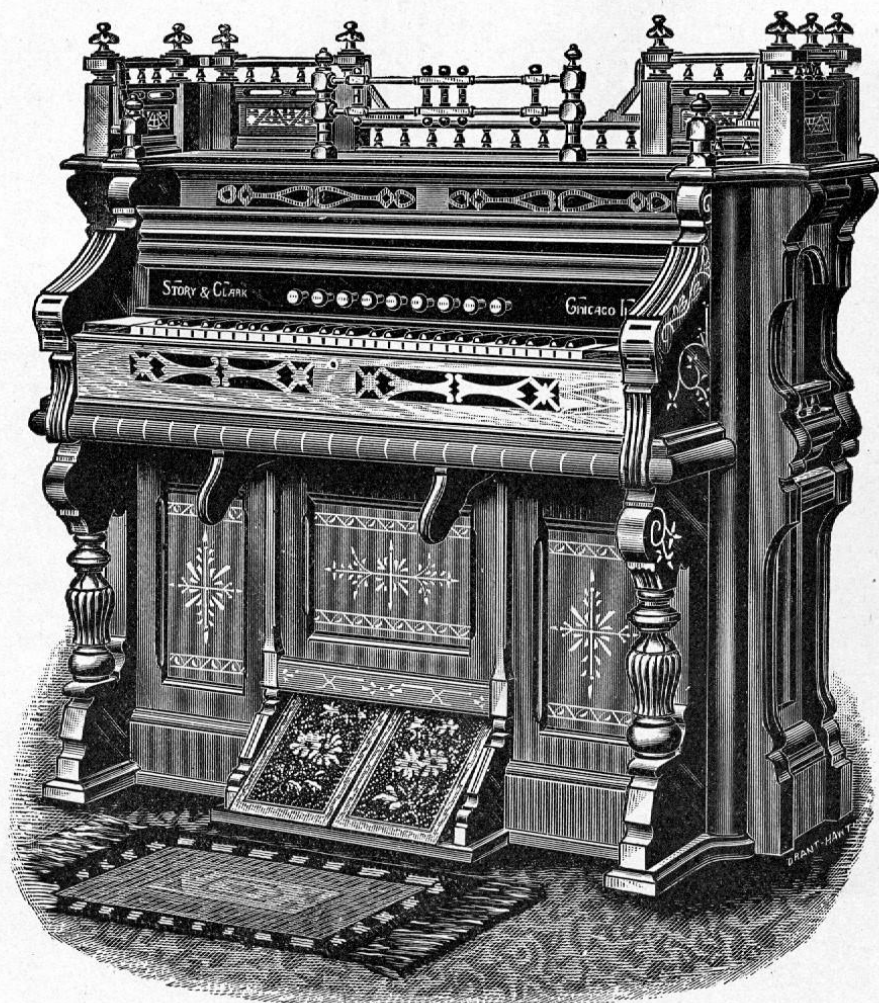
Height, 9 ft. 5 in. Length, 5 ft. 3 in. Depth, 2 ft. 8 in.



STORY & CLARK ORGAN
COMPANY.

Style 350.

FRONT VIEW.



For description of this, and following cut, see page 22.

8.—The lower center panel is easily taken out exposing entire lower portion of organ.

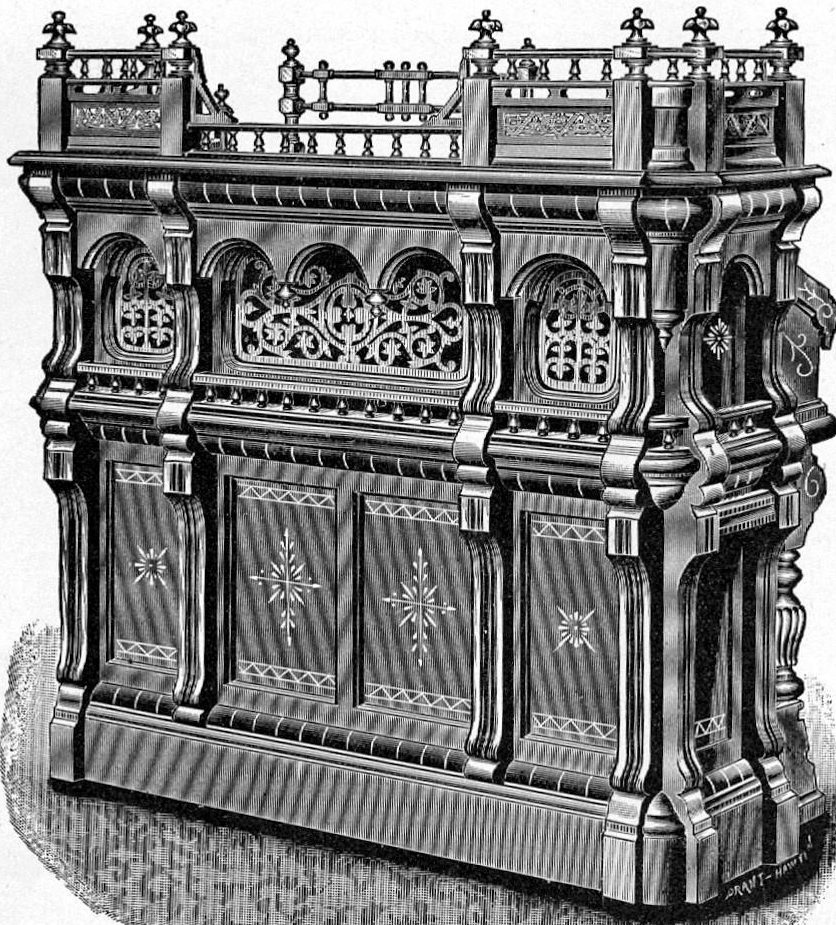


STORY & CLARK ORGAN

COMPANY.

Style * 350.

VIEW OF BACK.



Height, 4 feet 5 inches.

Length, 4 feet 8 inches.

Depth, 2 feet 3 inches.

Weight—boxed, 400 lbs.

9.—Our patent sliding fall board opens and closes easily and perfectly at any point.



STORY & CLARK ORGAN

COMPANY.

Style * 350.

ILLUSTRATED ON TWO PRECEDING PAGES.

THIS chapel organ won success upon its first appearance in public and has held sway wherever exhibited. So rapidly did it gain in favor that it has been exceedingly difficult to keep the supply equal to the demand heretofore. This style case has been carried over from last year without alteration or change. Its beauty and massiveness cannot be adequately described. Some idea of its elegance and effect may be formed by an examination of the two preceding cuts.

DESCRIPTION OF FIVE OCTAVE ORGANS.

Style 350.—Case illustrated on preceding pages. Contains four sets of reeds of two and one-half octaves each. Nine stops as follows: Diapason, Melodia, Viola, Celeste, Echo Horn, Dulcet, Bass Forte, Treble Forte, Vox Humana. Also has Knee Swell and our Patented Knee Grand Organ.

Style 351.—Case illustrated on preceding pages. Contains four sets of reeds of two and one-half octaves each and our Double Divided Octave Coupler. Eleven stops as follows: Diapason, Melodia, Viola, Celeste, Echo Horn, Dulcet, Bass Forte, Treble Forte, Bass Coupler, Treble Coupler and Vox Humana. Also has Knee Swell and our Patented Knee Grand Organ.

Style 352.—Case illustrated on preceding pages. Contains five sets of reeds—four sets of two and one-half octaves each, and one set of three octaves. Twelve stops as follows: Diapason, Melodia, Viola, Flute, Celeste, Echo Horn, Dulcet, Bass Forte, Treble Forte, Vox Humana, Bass Coupler and Treble Coupler. Also Knee Swell and our Patented Knee Grand Organ.

Style 353.—Case illustrated on preceding pages. Contains six sets of reeds—four sets of two and one-half octaves each, one set of three octaves, and one set of powerful Sub Bass Reeds. Thirteen stops as follows: Diapason, Melodia, Viola, Flute, Celeste, Dulcet, Echo Horn, Bass Forte, Treble Forte, Sub Bass, Bass Coupler, Treble Coupler, Vox Humana. Also has Knee Swell and our Patented Knee Grand Organ.

Style 354.—Case illustrated on preceding pages. Contains seven sets of reeds—four sets of two and one-half octaves each, two sets of three octaves each, and one set of very powerful double Sub Bass reeds. Fifteen stops as follows: Diapason, Melodia, Viola, Flute, Celeste, Cello, Vacuum Viola (patented), Dulcet, Echo Horn, Sub Bass, Bass Forte, Treble Forte, Vox Humana, Bass Coupler, Treble Coupler. Also has Knee Swell and our Patented Knee Grand Organ.

For list prices of all organs see page 2.

10.—Twenty-one improvements on our organ, protected either by letters patent of the United States already issued, or by applications filed.

